



## FI-ULLV-4M-MZ310

Fortek Intelligent Series Ultra Low Light 4MP WDR  
3-8mm lens Vandal Proof Dome Camera



## FORTEK INTELLIGENT SERIES

Fortek has launched a new series of AI network cameras with an advanced deep learning algorithm. These cameras excel in low-light conditions, offer superior image processing, and provide real-time deterrence against crime and unwanted behavior.

### KEY FEATURES



#### Easy Configuration

Easily and quickly enable a video analysis rule to start enjoying the simplicity and effectiveness AI performance. Users can easily enable an algorithm manually for specific use.



#### False Alarm Reduction

A new generation AI algorithm accurately senses and distinguishes human and vehicle movements from other moving objects, reducing false alarms.



#### Density Control by People Counting

Supports people counting when individuals enter and exit a specified area within a certain time frame.



#### Queue Management

A new generation AI algorithm can detect the number of people waiting in line and the wait time warning.

## AI FUNCTIONS

### Face Recognition

When a face is detected or recognized in the detection area, the system performs alarm linkage and supports searching face detection and recognition results.



### Pedestrian & Vehicle

Cameras automatically detect humans and vehicles through real-time video analytics and minimizing false alarms triggered by animals, falling leaves, heavy rain, and other moving objects.



## Intrusion

It is used to detect objects entering and loitering in a pre-defined virtual region.



## Region Entrance

It is used to detect objects entering a predefined virtual region from the outside place.



## Crossing Counting

It is used to detect people crossing a pre-defined virtual line, including entry number, exit number and stay number in area, and view the people counting data in report form.



## License Plate

When a motor vehicle triggers the rule line in the detection area, it will capture the license plate and report the attributes of the motor vehicle.



## Line Crossing

It used to detects objects crossing a user-specified virtual line in a specified direction.



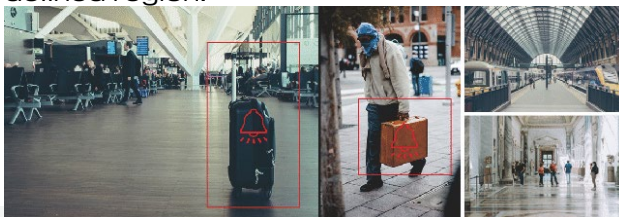
## Region Exiting

It is used to detect objects exiting from a pre-defined virtual region.



## Object Detection

It is used to detect the objects left over in the pre-defined region or It detects whether the objects are removed from the pre-defined region.



## Crowd Density

Crowd density monitoring monitors the number of people in a specified area and triggers an alarm if the number exceeds the set alarm threshold.



## Queue length

Cameras trigger a notification when the number of persons in line or the wait time of each person exceeds thresholds set by operators.



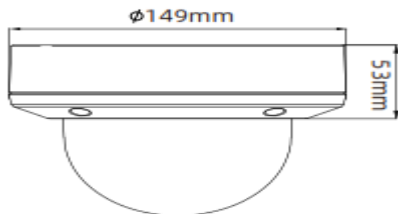
## Heat Map

Detect the distribution of moving objects in a target area over time and display it on a heat map, with blue for the lowest heat value and red for the highest.



## SPECIFICATIONS:

VIDEO	
Imaging Device	1/1.8"
Effective Pixels	4MP 2688(H) × 1520(V)
Min. Illumination	Color 0.0005lux @ F1.0(AGC ON); B/W 0 lux @ IR ON
LENS TYPE	
Focal Length	3 - 8mm
Max. Aperture Ratio	F1.0-F1.2
Angular Field of View	Horizontal: 105(W)-56(T)° Vertical: 53(W)-31(T)° Diagonal: 131(W)-65(T)°
Min. Object Distance	1.5m
OPERATIONAL SPECIFICATION	
IR LED	N/A
Warm Light	2
Red Blue Light	2 (1Red & 1 Blue)
Warm Light Viewable Distance	Up to 30m
Wide Dynamic Range	WDR
Image Setting	Full Color Mode
White Balance	Auto/Manual
Electronic Shutter Speed	1/5 ~ 1/20000s
On-Board Storage	Micro SD slot, up to 256GB
Audio/Alarm	1 input, 1 output, 1 Built-in microphone & speaker / 1 input, 1 output
Hardware Reset	Yes
Smart Feature	Face Recognition, Pedestrian & Vehicle, Line Crossing, Object Detection, Crossing Counting, Heat Map, Crowd Density, Queue Length, License Plate, Rare Sound, Intrusion, Region Entrance, Region Exiting
NETWORK	
Ethernet	RJ45(10/100BASE-T)
Video Compression Format	H.265/H.265+/H.264/H.264+/MJPEG
Resolution	4MP(2688x1520)@30fps
Video Quality Adjustment	256Kbps ~ 8Mbps
Protocol	TCP/IP, HTTP, DHCP, DNS, DDNS, RTP/RTSP, SMTP, NTP, UPnP, SNMP, HTTPS, FTP,

Application Programming Interface	ONVIF (Profile S/G/T/M)
<b>ENVIRONMENTAL</b>	
Operating Conditions	-35°C ~ +60°C/ ≤ 90% RH
Ingress Protection	IP67, IK10
Certification	CE, FCC Class A, ROHS, ONVIF (Profile S/G/T/M)
<b>ELECTRICAL</b>	
Power	DC12V/PoE(IEEE802.3af)
<b>MECHANICAL</b>	
Material	Metal
Dimensions	 <p>The drawing shows a side view of the camera. The top horizontal dimension is labeled <math>\phi 149\text{mm}</math>. The vertical dimension on the right side is labeled <math>53\text{mm}</math>. The camera has a hemispherical lens cover at the bottom.</p>