



## FI-DNB-5M-MZ550PW

Fortek Intelligent Series Day Night 5MP WDR 5 ~ 50mm lens Motorized Bullet Camera



## FORTEK INTELLIGENT SERIES

Fortek has launched a new series of AI network cameras with an advanced deep learning algorithm. These cameras excel in low-light conditions, offer superior image processing, and provide real-time deterrence against crime and unwanted behavior.

### KEY FEATURES



#### Easy Configuration

Easily and quickly enable a video analysis rule to start enjoying the simplicity and effectiveness AI performance. Users can easily enable an algorithm manually for specific use.



#### False Alarm Reduction

A new generation AI algorithm accurately senses and distinguishes human and vehicle movements from other moving objects, reducing false alarms.



#### Density Control by People Counting

Supports people counting when individuals enter and exit a specified area within a certain time frame.



#### Queue Management

A new generation AI algorithm can detect the number of people waiting in line and the wait time warning.

## AI FUNCTIONS

### Face Recognition

When a face is detected or recognized in the detection area, the system performs alarm linkage and supports searching face detection and recognition results.



### Pedestrian & Vehicle

Cameras automatically detect humans and vehicles through real-time video analytics and minimizing false alarms triggered by animals, falling leaves, heavy rain, and other moving objects.



## Intrusion

It is used to detect objects entering and loitering in a pre-defined virtual region.



## Region Entrance

It is used to detect objects entering a predefined virtual region from the outside place.



## Crossing Counting

It is used to detect people crossing a pre-defined virtual line, including entry number, exit number and stay number in area, and view the people counting data in report form.



## License Plate

When a motor vehicle triggers the rule line in the detection area, it will capture the license plate and report the attributes of the motor vehicle.



## Line Crossing

It used to detects objects crossing a user-specified virtual line in a specified direction.



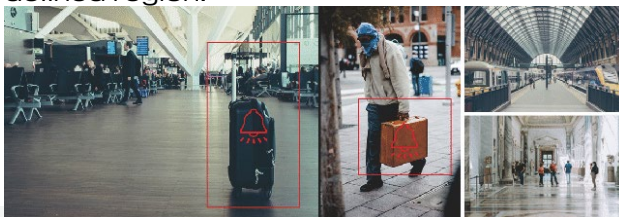
## Region Exiting

It is used to detect objects exiting from a pre-defined virtual region.



## Object Detection

It is used to detect the objects left over in the pre-defined region or It detects whether the objects are removed from the pre-defined region.



## Crowd Density

Crowd density monitoring monitors the number of people in a specified area and triggers an alarm if the number exceeds the set alarm threshold.



## Queue length

Cameras trigger a notification when the number of persons in line or the wait time of each person exceeds thresholds set by operators.



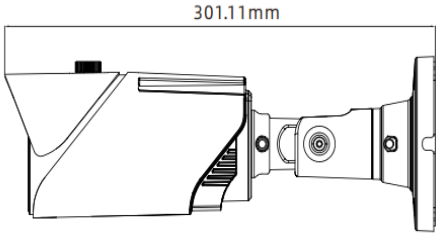
## Heat Map

Detect the distribution of moving objects in a target area over time and display it on a heat map, with blue for the lowest heat value and red for the highest.



## SPECIFICATIONS:

VIDEO	
Imaging Device	1/2.7"
Effective Pixels	5MP 2592(H) × 1944(V)
Min. Illumination	Color 0.003lux @ F1.6(AGC ON); B/W 0 lux @ IR ON
LENS TYPE	
Focal Length	5 ~ 50mm
Max. Aperture Ratio	F No. 2.0±5%
Angular Field of View	Horizontal: 45 ~ 7° Vertical: 33 ~ 5° Diagonal: 58 ~ 9°
Min. Object Distance	0.2m ~ ∞
Lens Type	Motorized (Ø14)
OPERATIONAL SPECIFICATION	
IR Viewable Length	Up to 80m
Day & Night	IR cut filter with auto switch (Day/Night/Auto/Image/Schedule)
Wide Dynamic Range	WDR
Digital Noise Reduction	3D DNR
Motion Detection	Off/On (8 Level)
White Balance	Auto/Manual
Electronic Shutter Speed	1/5 ~ 1/20000s
On-Board Storage	Micro SD slot, up to 256GB
Alarm	1 input, 1 output
Audio	1 input(RCA), 1 output(RCA),
Hardware Reset	Yes
Smart Feature	Face Recognition, Pedestrian & Vehicle, Line Crossing, Object Detection, Crossing Counting, Heat Map, Queue Length, License Plate, Rare Sound, Intrusion, Region Entrance, Region Exiting
NETWORK	
Ethernet	RJ45(10/100BASE-T)
Video Compression Format	H.265/H.265+/H.264/H.264+/MJPEG
Resolution	5MP(2592x1944)@30fps
Video Quality Adjustment	256Kbps ~ 8Mbps

Protocol	TCP/IP, HTTP, DHCP, DNS, DDNS, RTP/RTSP, SMTP, NTP, UPnP, SNMP, HTTPS, FTP,
Application Programming Interface	ONVIF (Profile S/G/T/M)
<b>ENVIRONMENTAL</b>	
Operating Conditions	-35°C ~ +60°C/ ≤ 90% RH
Ingress Protection	IP67,IK10
Certification	CE, FCC Class A, ROHS, ONVIF (Profile S/G/T/M)
<b>ELECTRICAL</b>	
Power Consumption	DC12V: max. 11.8W, PoE: max. 13.7W
<b>MECHANICAL</b>	
Material	metal
Dimensions	 <p>301.11mm</p>