



## FI-DN-5M-MZ2812

Fortek Intelligent Series Day Night 5MP WDR 2.8-12mm Motorized lens Bullet Camera



## FORTEK INTELLIGENT SERIES

Fortek has launched a new series of AI network cameras with an advanced deep learning algorithm. These cameras excel in low-light conditions, offer superior image processing, and provide real-time deterrence against crime and unwanted behavior.

### KEY FEATURES



#### Easy Configuration

Easily and quickly enable a video analysis rule to start enjoying the simplicity and effectiveness AI performance. Users can easily enable an algorithm manually for specific use.



#### False Alarm Reduction

A new generation AI algorithm accurately senses and distinguishes human and vehicle movements from other moving objects, reducing false alarms.



#### Density Control by People Counting

Supports people counting when individuals enter and exit a specified area within a certain time frame.



#### Queue Management

A new generation AI algorithm can detect the number of people waiting in line and the wait time warning.

## AI FUNCTIONS

### Face Recognition

When a face is detected or recognized in the detection area, the system performs alarm linkage and supports searching face detection and recognition results.



### Pedestrian & Vehicle

Cameras automatically detect humans and vehicles through real-time video analytics and minimizing false alarms triggered by animals, falling leaves, heavy rain, and other moving objects.



## Intrusion

It is used to detect objects entering and loitering in a pre-defined virtual region.



## Region Entrance

It is used to detect objects entering a predefined virtual region from the outside place.



## Crossing Counting

It is used to detect people crossing a pre-defined virtual line, including entry number, exit number and stay number in area, and view the people counting data in report form.



## License Plate

When a motor vehicle triggers the rule line in the detection area, it will capture the license plate and report the attributes of the motor vehicle.



## Line Crossing

It used to detects objects crossing a user-specified virtual line in a specified direction.



## Region Exiting

It is used to detect objects exiting from a pre-defined virtual region.



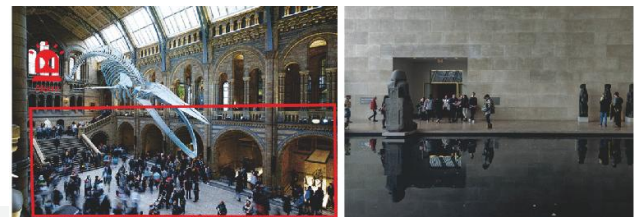
## Object Detection

It is used to detect the objects left over in the pre-defined region or It detects whether the objects are removed from the pre-defined region.



## Crowd Density

Crowd density monitoring monitors the number of people in a specified area and triggers an alarm if the number exceeds the set alarm threshold.



## Queue length

Cameras trigger a notification when the number of persons in line or the wait time of each person exceeds thresholds set by operators.



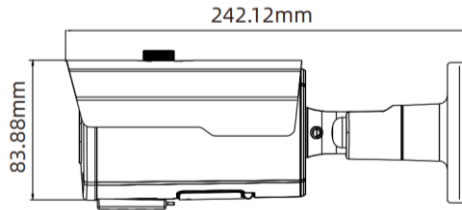
## Heat Map

Detect the distribution of moving objects in a target area over time and display it on a heat map, with blue for the lowest heat value and red for the highest.



## SPECIFICATIONS:

VIDEO	
Imaging Device	1/2.7"
Effective Pixels	5MP 2592(H) × 1944(V)
Scan Mode	Progressive
Min. Illumination	Color 0.003lux @ F1.6(AGC ON); B/W 0 lux @ IR ON
LENS TYPE	
Focal Length	2.7-13.5mm
Max. Aperture Ratio	F1.6
Angular Field of View	Horizontal: 31 ~ 102° Vertical: 23 ~ 73° Diagonal: 38 ~ 138°
Min. Object Distance	0.8m(W) & 1m(T)
Lens Type	Motorized, Auto Iris
OPERATIONAL SPECIFICATION	
IR Viewable Length	Up to 45m
Day & Night	IR cut filter with auto switch (Day/Night/Auto/Image/Schedule)
Backlight Compensation	Off/On (5 Zones)
Wide Dynamic Range	WDR, 120dB
Digital Noise Reduction	3D DNR
Motion Detection	Off/On (8 Level)
Image Setting	Full Color Mode
Privacy Masking	Off/On (4 Zone, Rectangle)
Gain Control	Auto
White Balance	Auto/Manual
Electronic Shutter Speed	1/5 ~ 1/20000s
On-Board Storage	Micro SD slot, up to 256GB
Alarm	1 input, 1 output
Audio	1 input(RCA), 1 output(RCA),
Hardware Reset	Yes
Smart Feature	Face Recognition, Pedestrian & Vehicle, Line Crossing, Object Detection, Crossing Counting, Heat Map, Crowd Density, Queue Length, License Plate, Rare Sound, Intrusion, Region Entrance, Region Exiting

NETWORK	
Ethernet	RJ45(10/100BASE-T)
Video Compression Format	H.265/H.264/H.265+/H.264+/MJPEG
Resolution	<b>Main-stream @ 30 FPS</b> 5MP(2880x1620), 4MP(2592x1520), 3MP(2304x1296), 1080P(1920x1080), 960P(1280x960), 720P(1280x720) <b>Sub-stream @ 30 FPS</b> 720P(1280x720), VGA(640x480), QVGA(320x240) <b>Mobile-stream @ 30 FPS</b> VGA(640x480), QVGA(320x240)
Video Quality Adjustment	256Kbps ~ 8Mbps
Bitrate control method	CBR/VBR
Streaming Capability	Triple-Stream (Main/Sub/Mobile)
Protocol	TCP/IP, HTTP, DHCP, DNS, DDNS, RTP/RTSP, SMTP, NTP, UPnP, SNMP V2/V3, HTTPS, FTP, 802.1x, ICMP, IGMP
Security	IP address filter; complicated password; Authenticated username and password, HTTPS encrypted data transmission, SSL
Streaming Method	Unicast/Multicast
Application Programming Interface	ONVIF (Profile S/G/T/M)
Web Viewer	IE10/11, Safari V12.1 above, Firefox V.52 above, Google chrome V.57 above, Edge V.79 above
ENVIRONMENTAL	
Operating Conditions	-30°C ~ +60°C/less than ≤ 95% RH
Ingress Protection	IP67, IK10
Certification	CE, FCC Class A, ROHS, ONVIF( Profile S/G/T/M)
ELECTRICAL	
Input Voltage / Current	D12V/POE(IEEE802.3af)
Power Consumption	DC12V: max. 7W, PoE: max. 9W
MECHANICAL	
Construction	Body: White Aluminum
Camera Angle of Adjustment	3-Axis. PAN>355; Tilt 70°; Rotate ± 355°
Mounting	Surface mount (wall or ceiling)
Dimensions	
Weight	1.2kg